



HIGH POWER STROBOSCOPE SS-SERIES

CONTINUOUS 100 WATT LAMP INPUT POWER FOR HIGH LUMINANCE & ACCURACY



Single Lamp type SS-1000 SS-1500

The digital seven segment display gives direct readings in rpm with an accuracy of ± 1 rpm. Adjustment is carried out by one knob covering the whole range with a 10 rotation potentiometer. Fine adjustments can be made by the other knob with a revolution of 1 rpm. The luminance power changes automatically to four levels according to the revolution value selected.

HIGH POWER SINGLE LAMP TYPE

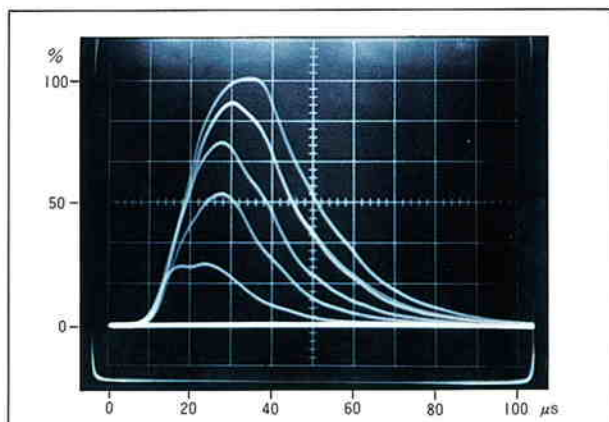
| MODEL | SS-1000 | SS-1500 |
|-------------------------------------|-----------------|-----------------|
| Revolution range (rpm) | 100~12,000 | 100~30,000 |
| Exto. synchro signal frequency (Hz) | 0~200 | 0~500 |
| Max. lamp input power | 100W continuous | 100W continuous |

■ Power supply unit: Ext. dimension W265×H160×D310mm Weight 7.5kg
 ■ Flash unit: Ext. dimension W130×H120×D175mm Weight 1.5kg

Common specifications ■ Display: LED 5 digit, min. reading 1 rpm ● Measurement accuracy: 0.01%+1 rpm. ● Gate time: 1 sec. ● Ext. synchro signal: a) TTL level signal with either + or - edge. b) Mechanical contact—break or make. ■ Lamp: Xenon flash lamp SX-100 ● Life: over 2×10^8 flashes. ■ Flash pulse: 15 to 25 μ s ● Color temperature: 6500°K ● Output voltage: 3V negative pulse wave ● High voltage power supply: Switching type with constant voltage ■ Power supply: AC 100,110,117,220,240V according to order. max.300VA (W type max. 600VA)

Automatic luminance control (controlled by internal oscillator)

| SS-1000 | | SS-1000W | | SS-1500W | |
|------------------------------|----------------------------|------------------------------|----------------------------|------------------------------|----------------------------|
| Revolution range rpm approx. | Lamp input power per flash | Revolution range rpm approx. | Lamp input power per flash | Revolution range rpm approx. | Lamp input power per flash |
| 100~4000 | 1.5 J/F | 100~1500 | 4 J/F | 100~4200 | 1.45J/F |
| 4000~6000 | 1.0 J/F | 1500~3000 | 2 J/F | 4200~6300 | 0.95J/F |
| 6000~8000 | 0.75J/F | 3000~6000 | 1 J/F | 6300~13000 | 0.45J/F |
| 8000~12000 | 0.5 J/F | 6000~12000 | 0.5J/F | 13000~30000 | 0.2 J/F |



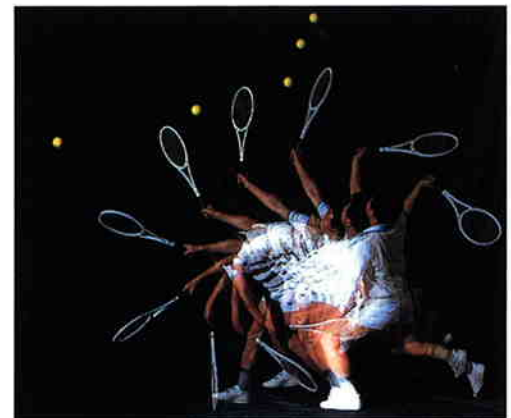
Double Lamp type SS-1000W SS-1500W

- * Observation and photographing of objects moving at a high speed.
- * Long distance observation thanks to high power luminance.
- * Inspection of scratches on rolled steel plates where high luminance is required.
- * Positioning of register mark and inspection on printing machines.
- * With the double lamp type shadows can be eliminated.

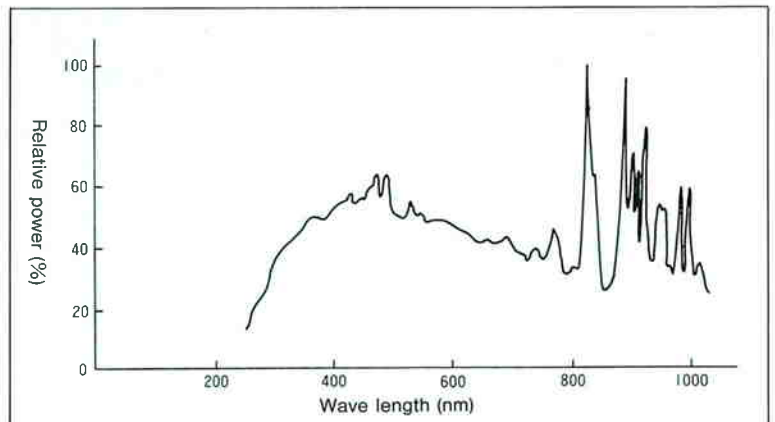
HIGH POWER DOUBLE LAMP TYPE

| MODEL | SS-1000W | SS-1500W |
|-------------------------------------|------------|------------|
| Revolution range (rpm) | 100~12,000 | 100~30,000 |
| Exto. synchro signal frequency (Hz) | 0~200 | 0~500 |
| Max. lamp input power | 100W×2 | 100W×2 |

■ Power supply unit: Ext. dimension W430×H150×D400mm Weight 15kg
 ■ Flash unit: Ext. dimension W190×H190×D230mm Weight 3kg×2



Multistrobe exposure



Flash waveform and spectrum of xenon lamp SX-100